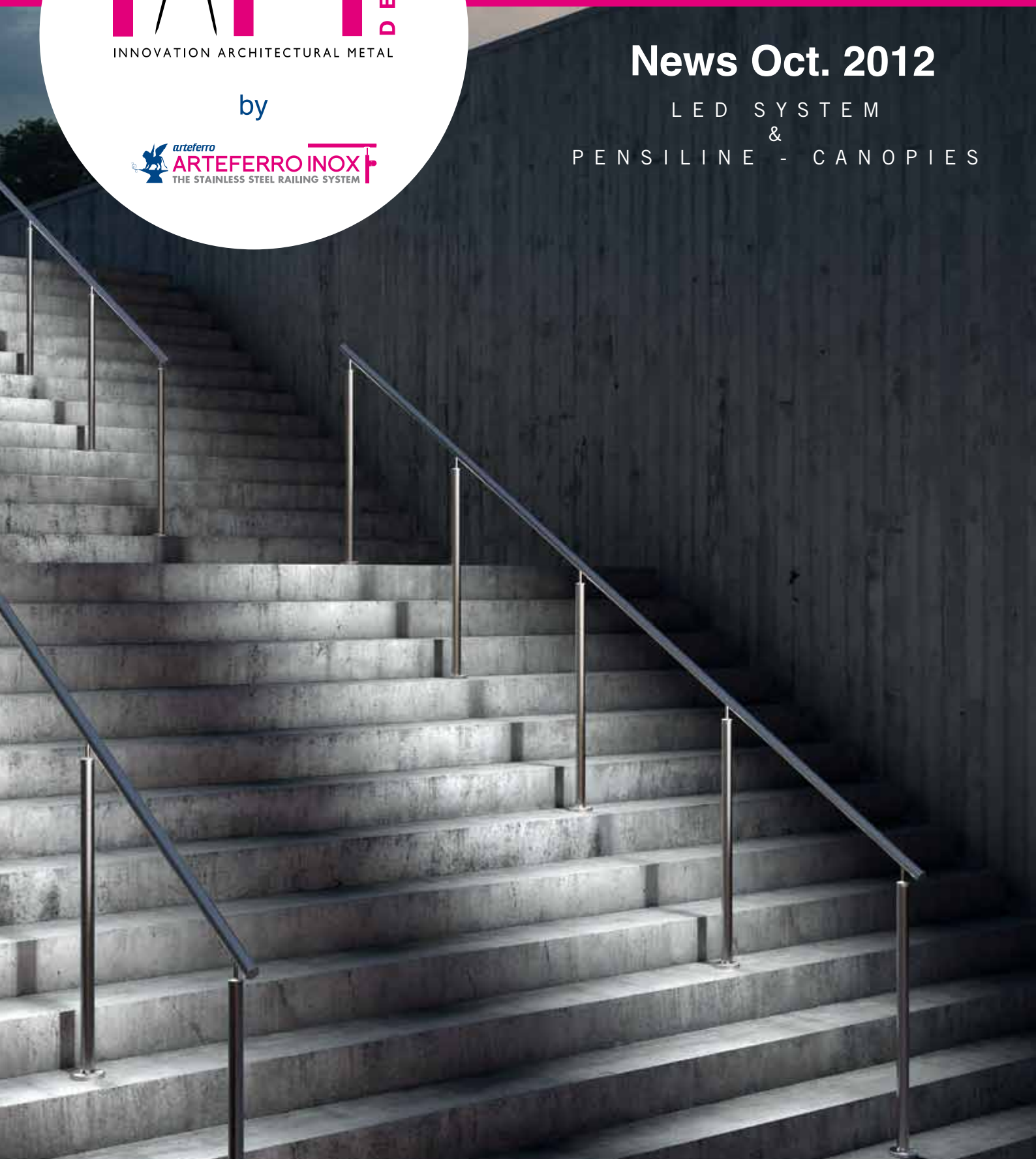


by



# News Oct. 2012

LED SYSTEM  
&  
PENSILINE - CANOPIES





by



Nel ringraziarVi per l'attenzione dedicata alla lettura di questo documento, Vi ricordiamo che IAMdesign può soddisfare ogni Vostra particolare esigenza con progetti studiati e realizzati ad hoc. Per qualsiasi informazione Vi preghiamo di contattarci:  
tel. 0445 580580  
e-mail: [info@arteferro.com](mailto:info@arteferro.com)

*While thanking you for the attention given to this document, may we remind you that IAMdesign can satisfy any special need you might have, with projects studied and realized "ad hoc"*  
*For any information, feel free to contact us:*  
Phone: +39 0445 580580  
e-mail: [info@arteferro.com](mailto:info@arteferro.com)

È un' innovativa creazione di IAMdesign che ti permette di integrare armonicamente l'illuminazione alle architetture più svariate.

Molto utile perchè permette di illuminare una scala o una passeggiata senza dover necessariamente illuminare tutto un ambiente.

Aumenta la tua sicurezza senza aumentare i tuoi costi grazie ai LED di ultimissima generazione ad alto risparmio energetico

*It is an innovative creation of IAMdesign that allows you to harmoniously integrate the lighting to various architectures.*

*Very useful because it allows you to enlighten a stairway or a walk without having to light up an entire room.*

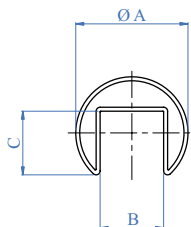
*Increase your security without increasing your costs thanks to LED of the latest generation with high energy savings*

**IAM** DESIGN®  
INNOVATION ARCHITECTURAL METAL

by

arteferro  
**ARTEFERRO INOX**  
THE STAINLESS STEEL RAILING SYSTEM

RAILING LED SYSTEM



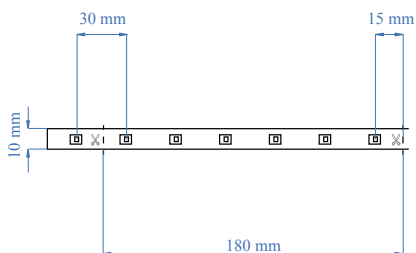
Corrimano in acciaio appositamente disegnato per la linea Railing Led System

Steel handrail specially designed for the Railing LED System line

AISI304	AISI316	Tubo Tube	A	B	C
E1000424	E1100424	Ø 42,4 x 1,5 x 6000 mm 1 2/3" dia. x 1/16" x 19' - 8"		25 mm 1"	24 mm 15/16"

Il rivoluzionario Cavo Led: totalmente impermeabilizzato subacqueo ultraluminoso (sopra a 180 lumen) ultrasottile, flessibile facile da installare e tagliare praticamente indistruttibile

The revolutionary LED Cable: totally waterproof underwater ultra-bright (over 180 lumens) ultra-thin flexible easy to install and cut, virtually indestructible



LED	L bobina L coil
ELED0001	Vendute a bobine da 25 metri Sold in coils of 984 1/4"

info

Input voltaggio - Input voltage	24 V
Input corrente - Input current	154 mA
Potenza - Power	3,7 W/m
Peso - Weight	60 g/m
Vita - Life time	35,000h
Angolo luminosità - Beam angle	110 C°
Luminouse /mt	198 lm
CRI	72
N. Led/18 cm/7 1/16"	6
T° di esercizio - Operating T°	-20 C° + 50 C°

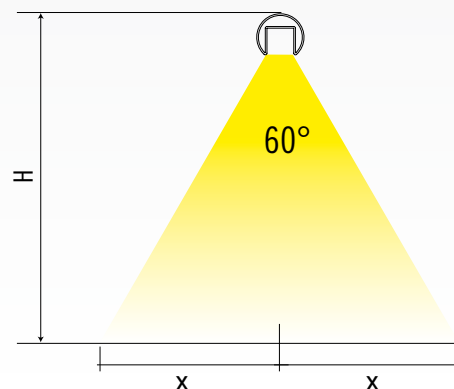


Ogni 18 cm sono segnati i punti dov'è possibile tagliare il nastro

Every 7 1/16" you find marks where you can cut the ribbon

USCITA LUCE E DISTRIBUZIONE COLORE  
LIGHT EXIT AND COLOUR DISTRIBUTION

H	X
1200 mm - 47 1/4"	692 mm - 27 1/4"
1100 mm - 43 1/4"	635 mm - 25"
1000 mm - 39 1/2"	579 mm - 22 13/16"
900 mm - 35 7/16"	519 mm - 20 7/16"
800 mm - 31 1/2"	461 mm - 18 5/32"



	Descrizione <i>Description</i>
ELED0002	Per collegare la striscia Led all'alimentatore <i>To connect the LED strip to the feeder</i>
	Descrizione <i>Description</i>
ELED0003	Per unire due strisce Led linearmente <i>To join two LED strips linearly</i>
	Descrizione <i>Description</i>
ELED0004	Per unire due strisce Led con un cavo flessibile di 15 cm <i>To join two LED strips by a 5 7/8" flexible cable</i>
	Descrizione <i>Description</i>
ELED0005	Da utilizzare ad ogni installazione. Protegge la fine della striscia non connessa <i>To be used at each installation. Protects the end of the strip not connected</i>



Alimentatori  
*Feeders*

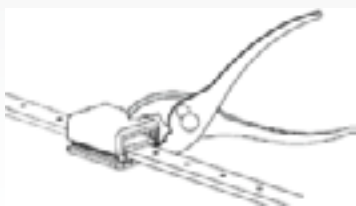
	Dimensioni <i>Dimensions</i>	INPUT	OUTPUT	POTENZA <i>POWER</i>
ELED0100	190 x 52 x 37 mm 7 15/32" x 2 1/32" x 1 7/16"	100-240VAC 2,2 A 50/60 Hz	+24 V 4,2 A	100 W < 27 mt - 1063"
ELED0110	162,5 x 42,5 x 32 mm 6 3/8" x 1 21/32" x 1 1/4"	100-240VAC 1,2 A 50/60 Hz	+24 V 2,5 A	60 W < 16 mt - 629-29/32"
ELED0120	148 x 40 x 30 mm 5 13/16" x 1 9/16" x 1 3/16"	100-240VAC 1,1 A 50/60 Hz	+24 V 1,5 A	35 W < 9 mt - 354-5/16"
ELED0130	140 x 30 x 20 mm 7 1/2" x 1 3/16" x 25/32"	200-240VAC 0,3 A 50/60 Hz	+24 V 0,75 A	18 W < 4 mt - 157-1/2"



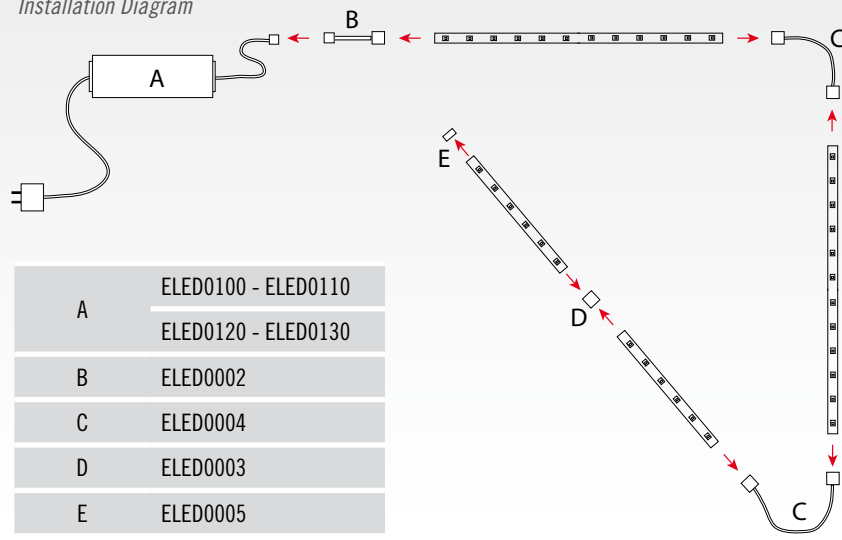
info

Utilizzare una pinza per fare pressione sia dall'alto che nel basso dei connettori per unire le strisce di Led

*Use a clamp to apply pressure from above and below the connectors to join the strips of Leds*



Schema di montaggio  
*Installation Diagram*



Il semplicissimo sistema di led railing utilizza dei braccetti di sostegno di facile fissaggio al tubo scanalato.

The simple LED railing system employs supporting brackets that can be easily attached to the slotted tube. To attach the strips led to the slotted handrail

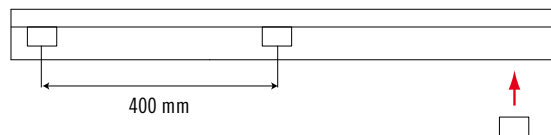
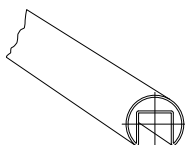
Descrizione Description	
ELED0006	Per attaccare le strisce Led al corrimano scanalato To attach the strips led to the slotted handrail



①

Applicare l'articolo ELED0006 all'interno del tubo scanalato grazie all'utilizzo del collante adesivo che si trova in dotazione. Posizionare i braccetti di fissaggio ad una distanza massima di 400 mm.

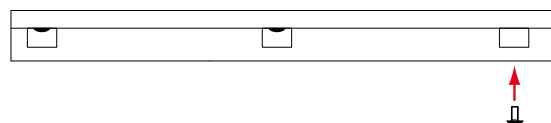
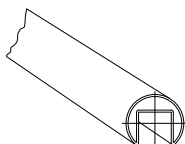
Apply the article ELED0006 inside the slotted tube using the supplied adhesive glue. Place the locking brackets at a maximum distance of 15 3/4 "



②

Per un fissaggio ancora più sicuro è possibile utilizzare delle viti M3 ancorate direttamente al corrimano scanalato. Ind.i.a. consiglia di eseguire un pre-foro prima di utilizzare la vite M3

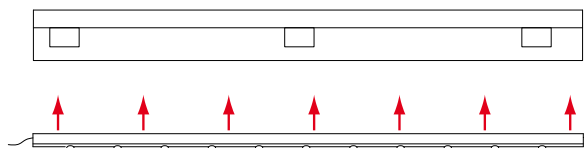
For a more secure fixing you can use the M3 screws directly anchored to the slotted handrail. Ind.i.a. recommends to make a pre-drilled hole before using the M3 screw



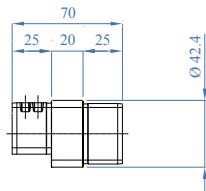
③

Applicare le luci Led al braccetto facendo una leggera pressione.

Apply the LED lights to the bracket by a slight pressure.





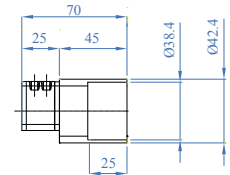


**AISI316**

Descrizione  
Description

E1200120

Per unire il tubo scanalato ad un normale tubo Ø 42,4 mm  
To join the slotted tube to a normal tube 1 2/3" dia.

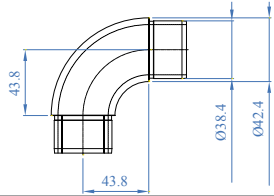


**AISI316**

Descrizione  
Description

E1200130

Per unire il tubo scanalato all'articolo E450  
To join the slotted tube to art. E450

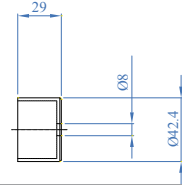


**AISI316**

Descrizione  
Description

E450

Raccordo a 90°  
90° connector

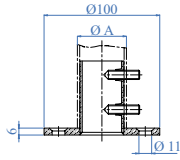


**AISI316**

Descrizione  
Description

E1100120

Per andare con il cavo a parete  
To lead the cable to the wall



Fori con svassi e  
perimetro bisellato  
Countersunk holes and  
chamfered perimeter

**AISI304**

**AISI316**

Descrizione  
Description

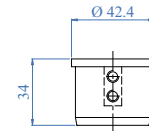
Per tubo  
For tube A

E0213

E0213316

Ancoraggio a pavimento  
Floor anchorage

Ø 42,4 x 2,0 mm  
1 2/3" dia. x 5/64"

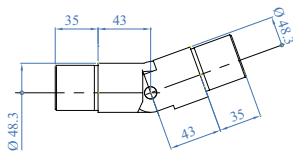


**AISI316**

Descrizione  
Description

E1100100

Tappo terminale  
End cap

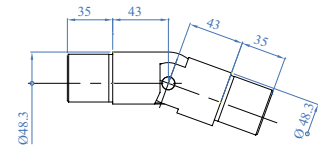


**AISI316**

Descrizione  
Description

E1510100

Raccordo per tubo scanalato basculante  
Articulated connector for slotted tube

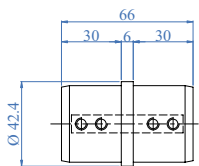


**AISI316**

Per tubo  
For tube

E1520100

Raccordo basculante per tubo scanalato 25-55° verso il basso  
Articulated connector 25-55° down for slotted tube

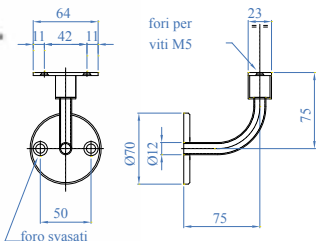
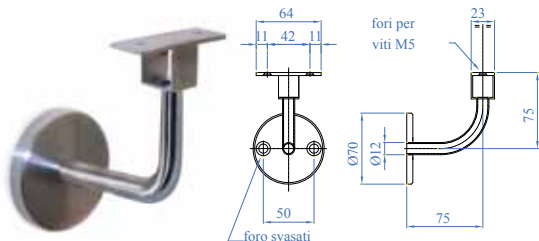


**AISI316**

Per tubo  
For tube

E1200100

Ø 42,4 x 1,5 mm  
1 2/3" dia. x 1/16"

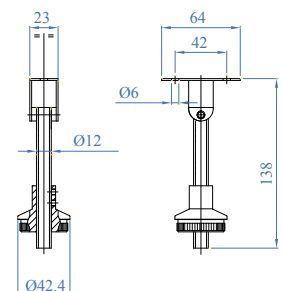


**AISI316**

Descrizione  
Description

E1530100

Reggicorrimano a parete  
Wall handrail support



**AISI316**

Per tubo  
For tube

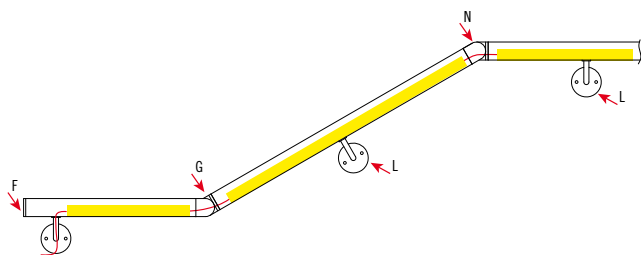
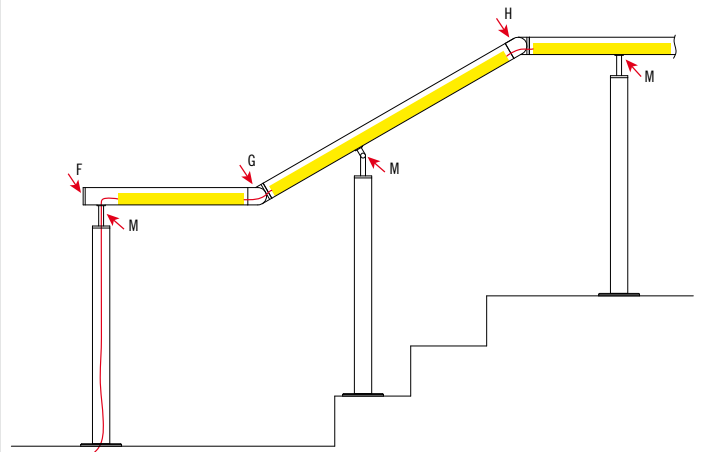
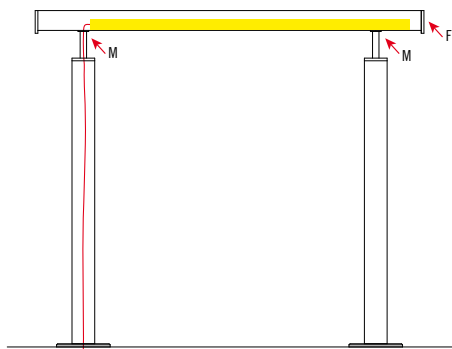
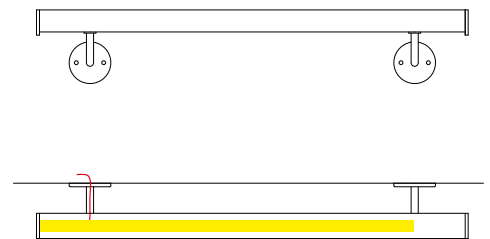
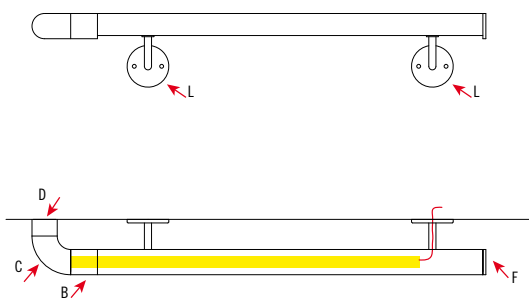
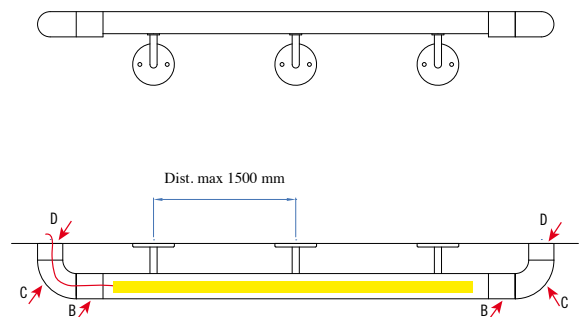
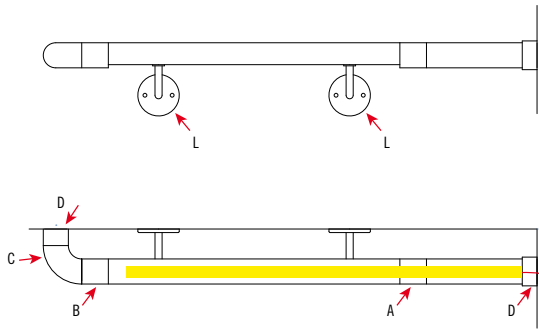
E1540100

Reggicorrimano per montante  
Handrail support for newelpost





ESEMPI DI APPLICAZIONE  
EXAMPLES OF APPLICATIONS



A E1200120

B E1200130

C E450

D E1100120

E E0213

F E1100100

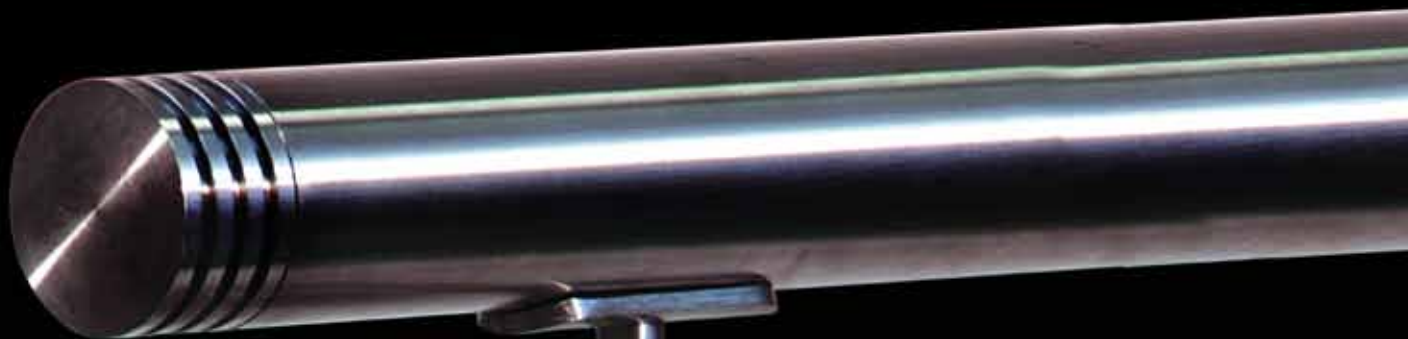
G E1510100

H E1520100

I E1200100

L E1530100

M E1540100



POST LED SYSTEM integra un LED a basso voltaggio ad un qualsiasi Parapetto realizzato con i prodotti IAMdesign

E un semplice sistema per rendere più sicuri i parapetto e le scale sia per uso interno che esterno.

*POST LED SYSTEM integrates a low voltage LED to any Railing made with IAMdesign products*

*It's a simple system to make more secure railings and stairways for both indoor and outdoor use.*

**IAM** DESIGN®  
INNOVATION ARCHITECTURAL METAL

by

arteferro  
**ARTEFERRO INOX**  
THE STAINLESS STEEL RAILING SYSTEM

POST LED SYSTEM

USO INTERNO ED  
ESTERNO  
INDOOR  
OUTDOOR USE



USO INTERNO ED  
ESTERNO  
INDOOR  
OUTDOOR USE



Forma cilindrica Ø 42,4 mm  
Cylindric shape 1 2/3" dia.

<b>AISI316</b>	Per tubo For tube
ELED1000	Ø 42,4 x 2,0 mm - 1 2/3" dia. x 5/64"
ELED1100	Superficie piana - Flat face

Forma cubica lato 40 mm  
Cubic shape side 1 9/16"

<b>AISI316</b>	Per tubo For tube
ELED2000	Ø 42,4 x 2,0 mm - 1 2/3" dia. x 5/64"
ELED2100	Superficie piana - Flat face

FASI DI INSTALLAZIONE DEL LED  
INSTALLATION STEPS FO THE LED

①

Forare e filettare M8  
Drill and thread M8



②

Installare l'ancoraggio posteriore con  
la vite forata in dotazione  
Install the rear anchor using the  
drilled screw included



③

Inserire il cavo di alimentazione  
nel foro della vite e collegarlo  
all'alimentatore  
Enter the power cable into the screw  
hole and connect it to the feeder



④

Fissare il faretto al suo ancoraggio  
stringendo il grano  
Fix the spotlight to its anchor by  
tightening the grain

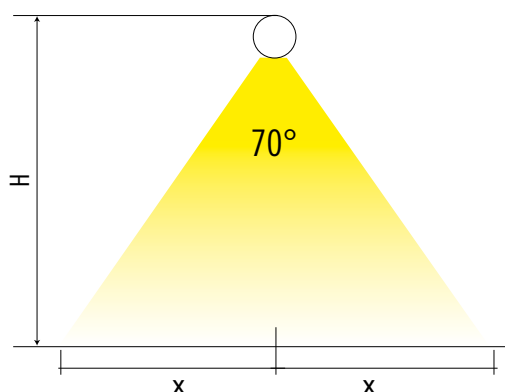


USCITA LUCE E DISTRIBUZIONE COLORE  
LIGHT EXIT AND COLOUR DISTRIBUTION

H	X
1200 mm - 47 1/4"	840 mm - 33 1/16"
1100 mm - 43 1/4"	770 mm - 30 5/16"
1000 mm - 39 1/2"	700 mm - 27 9/16"
900 mm - 35 7/16"	630 mm - 24 25/32"
800 mm - 31 1/2"	560 mm - 22 1/16"
700 mm - 27 9/16"	490 mm - 19 9/32"
600 mm - 23 5/8"	420 mm - 16 17/32"
500 mm - 19 11/16"	350 mm - 13 25/32"
400 mm - 15 3/4"	280 mm - 11 1/32"
300 mm - 11 13/16"	210 mm - 8 1/4"
200 mm - 7 7/8"	140 mm - 5 1/2"

⑤

Installazione completata  
Installation completed



Esempio di applicazione della Pensilina  
Mod. 1 con due tiranti  
Il più classico dei prodotti nel più classico  
degli utilizzi

*Example of application of Canopy  
Type 1 with two tension wires  
The most classic product in the most classic  
utilization*



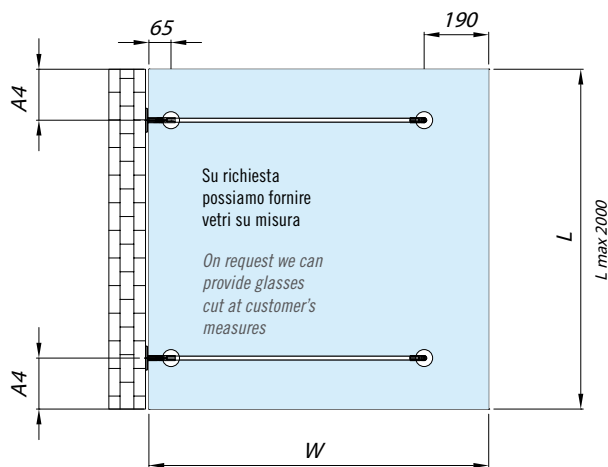
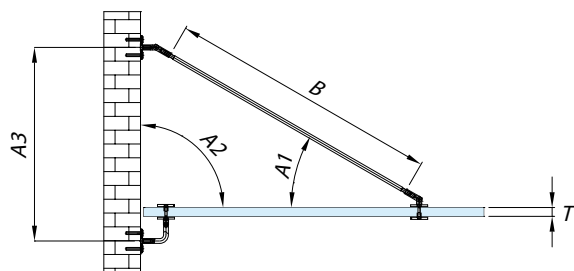
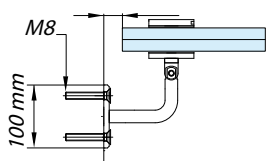
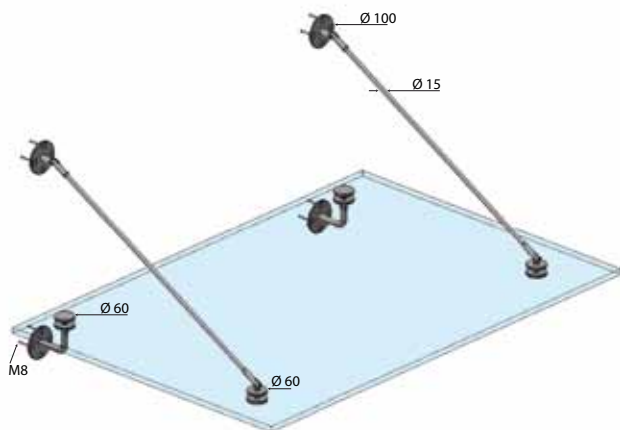
INNOVATION ARCHITECTURAL METAL

by

ARTEFERRO INOX  
THE STAINLESS STEEL RAILING SYSTEM

PENSILINE  
TRADIZIONALI

TRADITIONAL  
CANOPIES



Vetro non incluso - Glass not included

AISI316	Profondità W Width W	Composto da: Compsing of:
E95100	1000 mm - 39 1/2"	E96100 (2pc.) - E96200 (2pc.) E97100 (2pc.) - E98100 (2pc.)
E95110	1500 mm - 59 1/16"	E96100 (2pc.) - E96200 (2pc.) E97100 (2pc.) - E98200 (2pc.)

**Sistema di Pensiline IAMdesig con relative caratteristiche di carico.**

il sistema è stato testato e riflette l'alta Sicurezza che caratterizza i prodotti IAMdesig. I risultati interessano applicazioni con vetri di profondità 1000/1500 mm con l'utilizzo di 2 bracci di sostegno. I prodotti hanno superato i test necessari per garantirne la resistenza alla neve, al vento e altri fattori di sicurezza come richiesto da norme Europee.

**IAMdesig Canopies System with relevant load characteristics**

The system has been tested and reflects the high Security that characterizes IAMdesig the products. The results refer to applications with glasses of 1000/1500mm width with the use of two supporting brackets. The products have passed the tests necessary to ensure its resistance to snow, wind and other safety factors as required by European standards.

**RISULTATI DEI TEST CON VETRI TEMPERATI E ACCOPPIATI**

**TEST RESULTS WITH TEMPERED AND LAMINATED GLASSES**

Caratteristiche vetro Glass characteristics	T	L	W	Risul. Test Test results
8 + 8 mm + 1,52 mm pvb 5/16" + 5/16" + 1/16"		max 2000 mm max 78 3/4"	1000 mm 39 1/2"	2 kN/m <sup>2</sup>
10 + 10 mm / 1,52 mm pvb 3/8" + 3/8" + 1/16"		max 2000 mm max 78 3/4"	1000 mm 39 1/2"	3 kN/m <sup>2</sup>
12 + 12 mm / 1,52 mm pvb 1/2" + 1/2" + 1/16"		max 2000 mm max 78 3/4"	1000 mm 39 1/2"	3,5 kN/m <sup>2</sup>
10 + 10 mm / 1,52 mm pvb 3/8" + 3/8" + 1/16"		max 2000 mm max 78 3/4"	1500 mm 59 1/16"	3 kN/m <sup>2</sup>
12 + 12 mm / 1,52 mm pvb 1/2" + 1/2" + 1/16"		max 2000 mm max 78 3/4"	1500 mm 59 1/16"	3,5 kN/m <sup>2</sup>

**INFORMAZIONI IMPORTANTI PER UNA CORRETTA INSTALLAZIONE**

**IMPORTANT INFORMATION FOR A PROPER INSTALLATION**

W 1000 MM (TESTATI CON L MAX = 2000 MM)

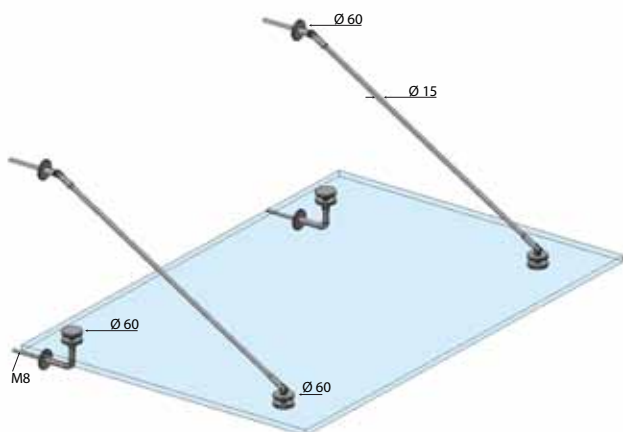
W 39 1/2" (TESTED WITH L MAX = 78 3/4")

A1	A2	A3	A4	W	B
30°	90°	570 mm 22 7/16"	150 mm 5 7/8"	1000 mm 39 1/2"	775 mm 30 1/2"
28°	92°	545 mm 21 15/32"	150 mm 5 7/8"	1000 mm 39 1/2"	775 mm 30 1/2"
26°	94°	520 mm 20 15/32"	150 mm 5 7/8"	1000 mm 39 1/2"	775 mm 30 1/2"
24°	96°	495 mm 19 1/2"	150 mm 5 7/8"	1000 mm 39 1/2"	775 mm 30 1/2"

W 1500 MM (TESTATI CON L MAX = 2000 MM)

W 59 1/16" (TESTED WITH L MAX = 78 3/4")

A1	A2	A3	A4	W	B
30°	90°	860 mm 33 27/32"	300 mm 11 13/16"	1500 mm 59 1/16"	1350 mm 53 5/32"
28,5°	91,5°	825 mm 32 1/2"	300 mm 11 13/16"	1500 mm 59 1/16"	1350 mm 53 5/32"
27°	93°	790 mm 31 1/8"	300 mm 11 13/16"	1500 mm 59 1/16"	1350 mm 53 5/32"
25,5°	94,5°	755 mm 29 23/32"	300 mm 11 13/16"	1500 mm 59 1/16"	1350 mm 53 5/32"



Vetro non incluso - Glass not included

AISI316	Profondità W Width W	Composto da: Compsing of:
E95200	1000 mm - 39 1/2"	E97100 (2pc.) - E96300 (2pc.) E96400 (2pc.) - E98100 (2pc.)
E95210	1500 mm - 59 1/16"	E97100 (2pc.) - E96300 (2pc.) E96400 (2pc.) - E98200 (2pc.)

**Sistema di Pensiline IAMdesig con relative caratteristiche di carico.**

il sistema è stato testato e riflette l'alta Sicurezza che caratterizza i prodotti IAMdesig. I risultati interessano applicazioni con vetri di profondità 1000/1500 mm con l'utilizzo di 2 bracci di sostegno. I prodotti hanno superato i test necessari per garantirne la resistenza alla neve, al vento e altri fattori di sicurezza come richiesto da norme Europee.

**IAMdesig Canopies System with relevant load characteristics**

The system has been tested and reflects the high Security that characterizes IAMdesig the products. The results refer to applications with glasses of 1000/1500mm width with the use of two supporting brackets. The products have passed the tests necessary to ensure its resistance to snow, wind and other safety factors as required by European standards.

**RISULTATI DEI TEST CON VETRI TEMPERATI E ACCOPPIATI**

**TEST RESULTS WITH TEMPERED AND LAMINATED GLASSES**

Caratteristiche vetro Glass characteristics	T	L	W	Risul. Test Test results
8 + 8 mm + 1,52 mm pvb 5/16" + 5/16" + 1/16"		max 2000 mm max 78 3/4"	1000 mm 39 1/2"	2 kN/m <sup>2</sup>
10 + 10 mm / 1,52 mm pvb 3/8" + 3/8" + 1/16"		max 2000 mm max 78 3/4"	1000 mm 39 1/2"	3 kN/m <sup>2</sup>
12 + 12 mm / 1,52 mm pvb 1/2" + 1/2" + 1/16"		max 2000 mm max 78 3/4"	1000 mm 39 1/2"	3,5 kN/m <sup>2</sup>
10 + 10 mm / 1,52 mm pvb 3/8" + 3/8" + 1/16"		max 2000 mm max 78 3/4"	1500 mm 59 1/16"	3 kN/m <sup>2</sup>
12 + 12 mm / 1,52 mm pvb 1/2" + 1/2" + 1/16"		max 2000 mm max 78 3/4"	1500 mm 59 1/16"	3,5 kN/m <sup>2</sup>

**INFORMAZIONI IMPORTANTI PER UNA CORRETTA INSTALLAZIONE**

**IMPORTANT INFORMATION FOR A PROPER INSTALLATION**

W 1000 MM (TESTATI CON L MAX = 2000 MM)

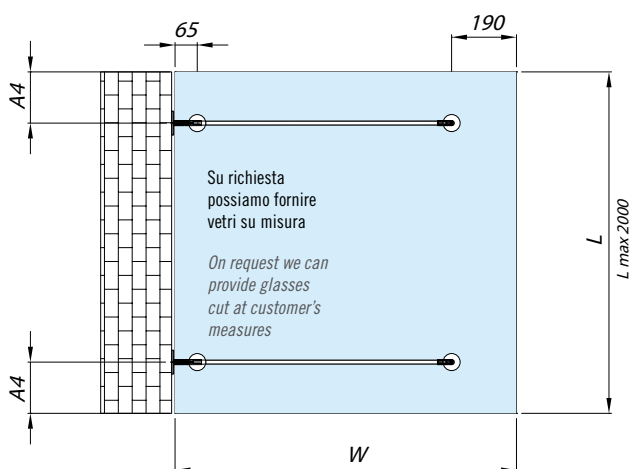
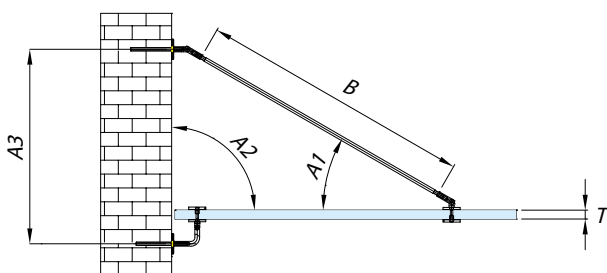
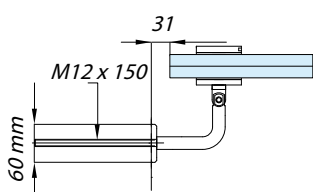
W 39 1/2" (TESTED WITH L MAX = 78 3/4")

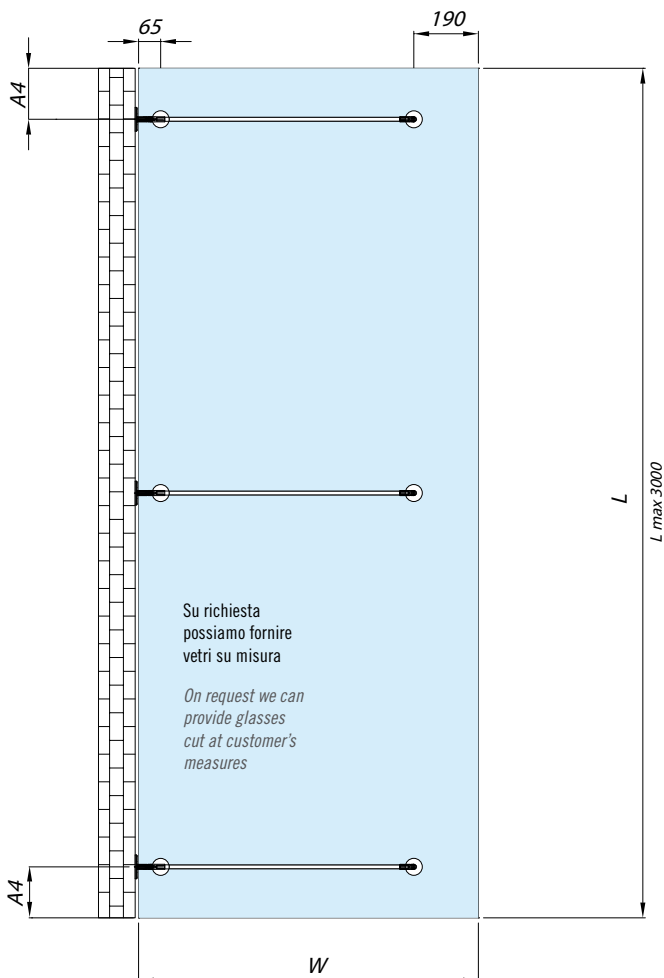
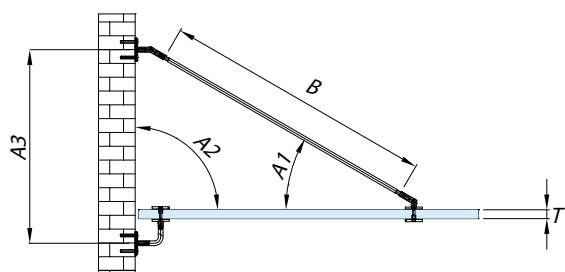
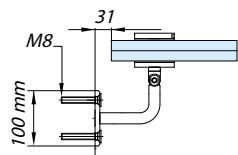
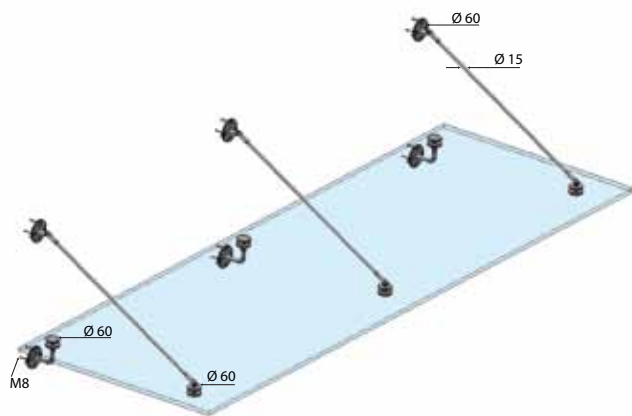
A1	A2	A3	A4	W	B
30°	90°	570 mm 22 7/16"	150 mm 5 7/8"	1000 mm 39 1/2"	775 mm 30 1/2"
28°	92°	545 mm 21 15/32"	150 mm 5 7/8"	1000 mm 39 1/2"	775 mm 30 1/2"
26°	94°	520 mm 20 15/32"	150 mm 5 7/8"	1000 mm 39 1/2"	775 mm 30 1/2"
24°	96°	495 mm 19 1/2"	150 mm 5 7/8"	1000 mm 39 1/2"	775 mm 30 1/2"

W 1500 MM (TESTATI CON L MAX = 2000 MM)

W 59 1/16" (TESTED WITH L MAX = 78 3/4")

A1	A2	A3	A4	W	B
30°	90°	860 mm 33 27/32"	300 mm 11 13/16"	1500 mm 59 1/16"	1350 mm 53 5/32"
28,5°	91,5°	825 mm 32 1/2"	300 mm 11 13/16"	1500 mm 59 1/16"	1350 mm 53 5/32"
27°	93°	790 mm 31 1/8"	300 mm 11 13/16"	1500 mm 59 1/16"	1350 mm 53 5/32"
25,5°	94,5°	755 mm 29 23/32"	300 mm 11 13/16"	1500 mm 59 1/16"	1350 mm 53 5/32"





Vetro non incluso - Glass not included

AISI316	Profondità W Width W	Composto da: Compsing of:
E95300	1000 mm - 39 1/2"	E96100 (3pc.) - E96200 (3pc.) E97100 (3pc.) - E98100 (3pc.)
E95310	1500 mm - 59 1/16"	E96100 (3pc.) - E96200 (3pc.) E97100 (3pc.) - E98200 (3pc.)

**Sistema di Pensiline IAMdesig con relative caratteristiche di carico.**

il sistema è stato testato e riflette l'alta Sicurezza che caratterizza i prodotti IAMdesign. I risultati interessano applicazioni con vetri di profondità 1000/1500 mm con l'utilizzo di 3 bracci di sostegno. I prodotti hanno superato i test necessari per garantirne la resistenza alla neve, al vento e altri fattori di sicurezza come richiesto da norme Europee.

**IAMdesig Canopies System with relevant load characteristics**

The system has been tested and reflects the high Security that characterizes IAMdesign the products. The results refer to applications with glasses of 1000/1500mm width with the use of three supporting brackets. The products have passed the tests necessary to ensure its resistance to snow, wind and other safety factors as required by European standards.

**RISULTATI DEI TEST CON VETRI TEMPERATI E ACCOPPIATI**

**TEST RESULTS WITH TEMPERED AND LAMINATED GLASSES**

Caratteristiche vetro Glass characteristics	T	L	W	Risul. Test Test results
8 + 8 mm + 1,52 mm pvb 5/16" + 5/16" + 1/16"	max 3000 mm max 118 1/8"	1000 mm 39 1/2"	2 kN/m <sup>2</sup>	
10 + 10 mm / 1,52 mm pvb 3/8" + 3/8" + 1/16"	max 3000 mm max 118 1/8"	1000 mm 39 1/2"	3 kN/m <sup>2</sup>	
12 + 12 mm / 1,52 mm pvb 1/2" + 1/2" + 1/16"	max 3000 mm max 118 1/8"	1000 mm 39 1/2"	3,5 kN/m <sup>2</sup>	
10 + 10 mm / 1,52 mm pvb 3/8" + 3/8" + 1/16"	max 3000 mm max 118 1/8"	1500 mm 59 1/16"	3 kN/m <sup>2</sup>	
12 + 12 mm / 1,52 mm pvb 1/2" + 1/2" + 1/16"	max 3000 mm max 118 1/8"	1500 mm 59 1/16"	3,5 kN/m <sup>2</sup>	

**INFORMAZIONI IMPORTANTI PER UNA CORRETTA INSTALLAZIONE**

**IMPORTANT INFORMATION FOR A PROPER INSTALLATION**

W 1000 MM (TESTATI CON L MAX = 2000 MM)

W 39 1/2" (TESTED WITH L MAX = 78 3/4")

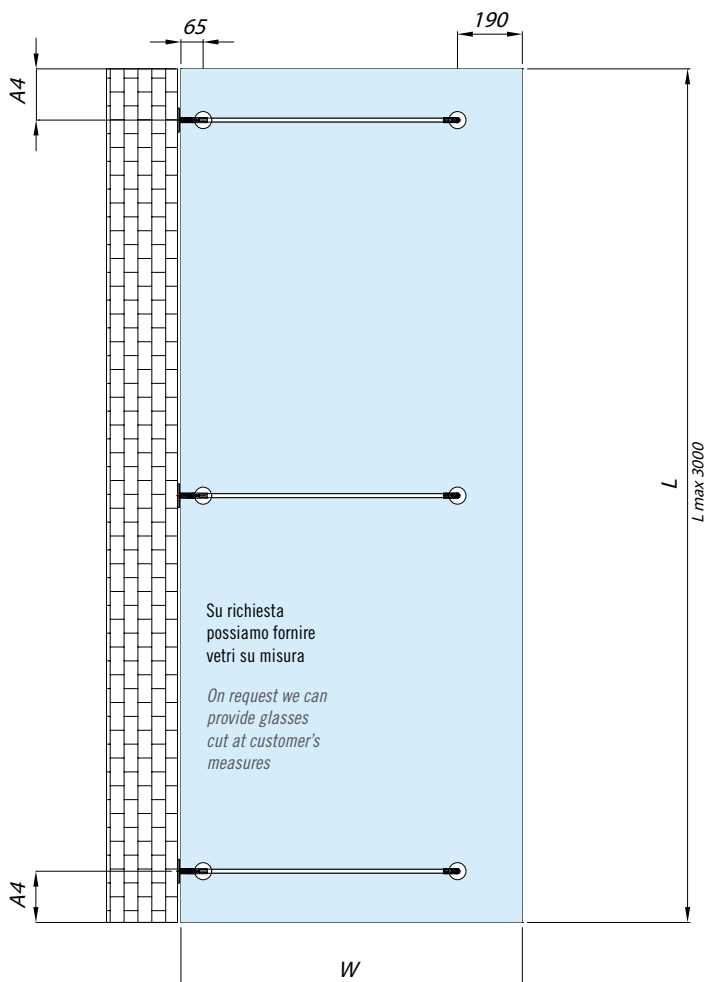
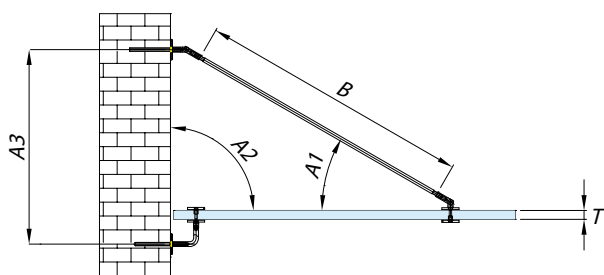
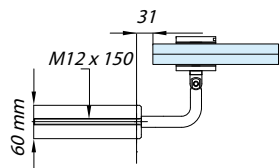
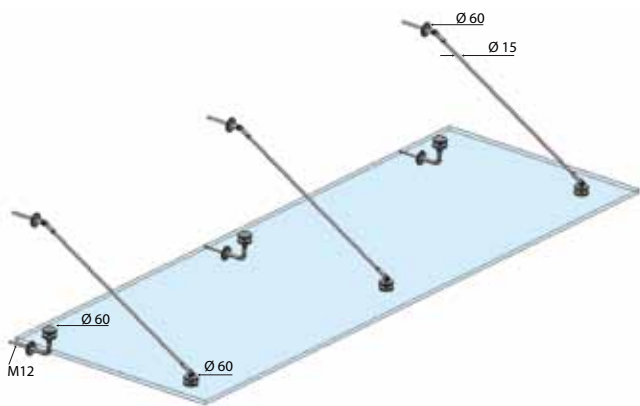
A1	A2	A3	A4	W	B
30°	90°	570 mm 22 7/16"	150 mm 5 7/8"	1000 mm 39 1/2"	775 mm 30 1/2"
28°	92°	545 mm 21 15/32"	150 mm 5 7/8"	1000 mm 39 1/2"	775 mm 30 1/2"
26°	94°	520 mm 20 15/32"	150 mm 5 7/8"	1000 mm 39 1/2"	775 mm 30 1/2"
24°	96°	495 mm 19 1/2"	150 mm 5 7/8"	1000 mm 39 1/2"	775 mm 30 1/2"

W 1500 MM (TESTATI CON L MAX = 2000 MM)

W 59 1/16" (TESTED WITH L MAX = 78 3/4")

A1	A2	A3	A4	W	B
30°	90°	860 mm 33 27/32"	300 mm 11 13/16"	1500 mm 59 1/16"	1350 mm 53 5/32"
28,5°	91,5°	825 mm 32 1/2"	300 mm 11 13/16"	1500 mm 59 1/16"	1350 mm 53 5/32"
27°	93°	790 mm 31 1/8"	300 mm 11 13/16"	1500 mm 59 1/16"	1350 mm 53 5/32"
25,5°	94,5°	755 mm 29 23/32"	300 mm 11 13/16"	1500 mm 59 1/16"	1350 mm 53 5/32"





Vetro non incluso - Glass not included

AISI316	Profondità W Width W	Composto da: Compsing of:
E95400	1000 mm - 39 1/2"	E97100 (3pc.) - E96300 (3pc.) E96400 (3pc.) - E98100 (3pc.)
E95410	1500 mm - 59 1/16"	E97100 (3pc.) - E96300 (3pc.) E96400 (3pc.) - E98200 (3pc.)

**Sistema di Pensiline IAMdesig con relative caratteristiche di carico.**

il sistema è stato testato e riflette l'alta Sicurezza che caratterizza i prodotti IAMdesign. I risultati interessano applicazioni con vetri di profondità 1000/1500 mm con l'utilizzo di 3 bracci di sostegno. I prodotti hanno superato i test necessari per garantirne la resistenza alla neve, al vento e altri fattori di sicurezza come richiesto da norme Europee.

**IAMdesig Canopies System with relevant load characteristics**

The system has been tested and reflects the high Security that characterizes IAMdesign the products. The results refer to applications with glasses of 1000/1500mm width with the use of three supporting brackets. The products have passed the tests necessary to ensure its resistance to snow, wind and other safety factors as required by European standards.

**RISULTATI DEI TEST CON VETRI TEMPERATI E ACCOPPIATI**  
**TEST RESULTS WITH TEMPERED AND LAMINATED GLASSES**

Caratteristiche vetro Glass characteristics	T	L	W	Risul. Test Test results
8 + 8 mm + 1,52 mm pvb 5/16" + 5/16" + 1/16"	max 3000 mm max 118 1/8"	1000 mm 39 1/2"	2 kN/m <sup>2</sup>	
10 + 10 mm / 1,52 mm pvb 3/8" + 3/8" + 1/16"	max 3000 mm max 118 1/8"	1000 mm 39 1/2"	3 kN/m <sup>2</sup>	
12 + 12 mm / 1,52 mm pvb 1/2" + 1/2" + 1/16"	max 3000 mm max 118 1/8"	1000 mm 39 1/2"	3,5 kN/m <sup>2</sup>	
10 + 10 mm / 1,52 mm pvb 3/8" + 3/8" + 1/16"	max 3000 mm max 118 1/8"	1500 mm 59 1/16"	3 kN/m <sup>2</sup>	
12 + 12 mm / 1,52 mm pvb 1/2" + 1/2" + 1/16"	max 3000 mm max 118 1/8"	1500 mm 59 1/16"	3,5 kN/m <sup>2</sup>	

**INFORMAZIONI IMPORTANTI PER UNA CORRETTA INSTALLAZIONE**

**IMPORTANT INFORMATION FOR A PROPER INSTALLATION**

W 1000 MM (TESTATI CON L MAX = 2000 MM)  
W 39 1/2" (TESTED WITH L MAX = 78 3/4")

A1	A2	A3	A4	W	B
30°	90°	570 mm 22 7/16"	150 mm 5 7/8"	1000 mm 39 1/2"	775 mm 30 1/2"
28°	92°	545 mm 21 15/32"	150 mm 5 7/8"	1000 mm 39 1/2"	775 mm 30 1/2"
26°	94°	520 mm 20 15/32"	150 mm 5 7/8"	1000 mm 39 1/2"	775 mm 30 1/2"
24°	96°	495 mm 19 1/2"	150 mm 5 7/8"	1000 mm 39 1/2"	775 mm 30 1/2"

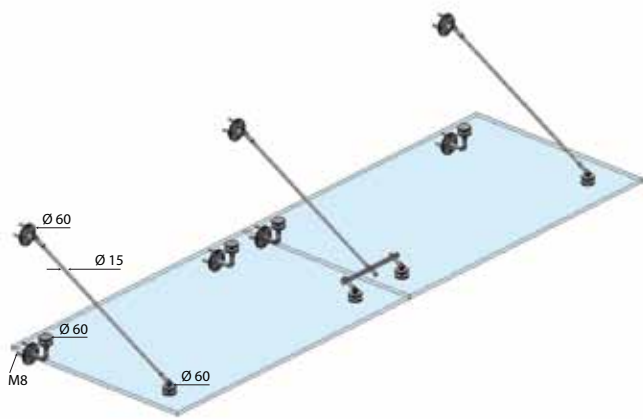
W 1500 MM (TESTATI CON L MAX = 2000 MM)  
W 59 1/16" (TESTED WITH L MAX = 78 3/4")

A1	A2	A3	A4	W	B
30°	90°	860 mm 33 27/32"	300 mm 11 13/16"	1500 mm 59 1/16"	1350 mm 53 5/32"
28,5°	91,5°	825 mm 32 1/2"	300 mm 11 13/16"	1500 mm 59 1/16"	1350 mm 53 5/32"
27°	93°	790 mm 31 1/8"	300 mm 11 13/16"	1500 mm 59 1/16"	1350 mm 53 5/32"
25,5°	94,5°	755 mm 29 23/32"	300 mm 11 13/16"	1500 mm 59 1/16"	1350 mm 53 5/32"

Esempio di applicazione della Pensilina  
Mod. 2 con doppio vetro  
Ideale per creare lunghi tratti riparati

*Example of application of the Canopy  
Mod 2 with double glass  
Ideal for creating long protected sections*





Vetro non incluso - Glass not included

AISI316	Profondità W Width W	Composto da: Compsing of:
E95500	1000 mm - 39 1/2"	E96200 (4pc.) - E96100 (3pc.) E97100 (2pc.) - E98100 (3pc.) - E97200 (1pc.)
E95510	1500 mm - 59 1/16"	E96200 (4pc.) - E96100 (3pc.) E97100 (2pc.) - E98200 (3pc.) - E97200 (1pc.)

**Sistema di Pensiline IAMdesig con relative caratteristiche di carico.**

il sistema è stato testato e riflette l'alta Sicurezza che caratterizza i prodotti IAMdesign. I risultati interessano applicazioni con vetri di profondità 1000/1500 mm con l'utilizzo di 3 bracci di sostegno. I prodotti hanno superato i test necessari per garantirne la resistenza alla neve, al vento e altri fattori di sicurezza come richiesto da norme Europee.

**IAMdesig Canopies System with relevant load characteristics**

The system has been tested and reflects the high Security that characterizes IAMdesign the products. The results refer to applications with glasses of 1000/1500mm width with the use of three supporting brackets. The products have passed the tests necessary to ensure its resistance to snow, wind and other safety factors as required by European standards.

**RISULTATI DEI TEST CON VETRI TEMPERATI E ACCOPPIATI**

TEST RESULTS WITH TEMPERED AND LAMINATED GLASSES

Caratteristiche vetro Glass characteristics	T	L	W	Risul. Test Test results
8 + 8 mm + 1,52 mm pvb 5/16" + 5/16" + 1/16"		max 1500 + 1500 mm max 59 1/16" + 59 1/16"	1000 mm 39 1/2"	2 kN/m <sup>2</sup>
10 + 10 mm / 1,52 mm pvb 3/8" + 3/8" + 1/16"		max 1500 + 1500 mm max 59 1/16" + 59 1/16"	1000 mm 39 1/2"	3 kN/m <sup>2</sup>
12 + 12 mm / 1,52 mm pvb 1/2" + 1/2" + 1/16"		max 1500 + 1500 mm max 59 1/16" + 59 1/16"	1000 mm 39 1/2"	3,5 kN/m <sup>2</sup>
10 + 10 mm / 1,52 mm pvb 3/8" + 3/8" + 1/16"		max 1500 + 1500 mm max 59 1/16" + 59 1/16"	1500 mm 59 1/16"	3 kN/m <sup>2</sup>
12 + 12 mm / 1,52 mm pvb 1/2" + 1/2" + 1/16"		max 1500 + 1500 mm max 59 1/16" + 59 1/16"	1500 mm 59 1/16"	3,5 kN/m <sup>2</sup>

**INFORMAZIONI IMPORTANTI PER UNA CORRETTA INSTALLAZIONE**

IMPORTANT INFORMATION FOR A PROPER INSTALLATION

W 1000 MM (TESTATI CON L MAX = 2000 MM)

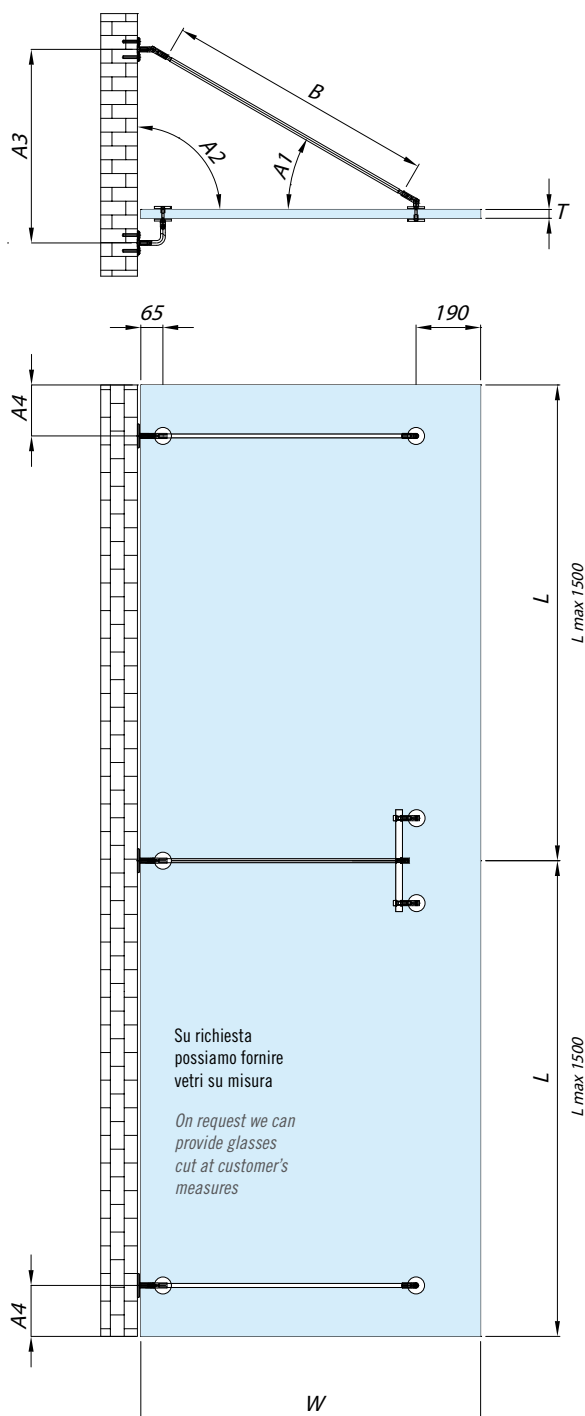
W 39 1/2" (TESTED WITH L MAX = 78 3/4")

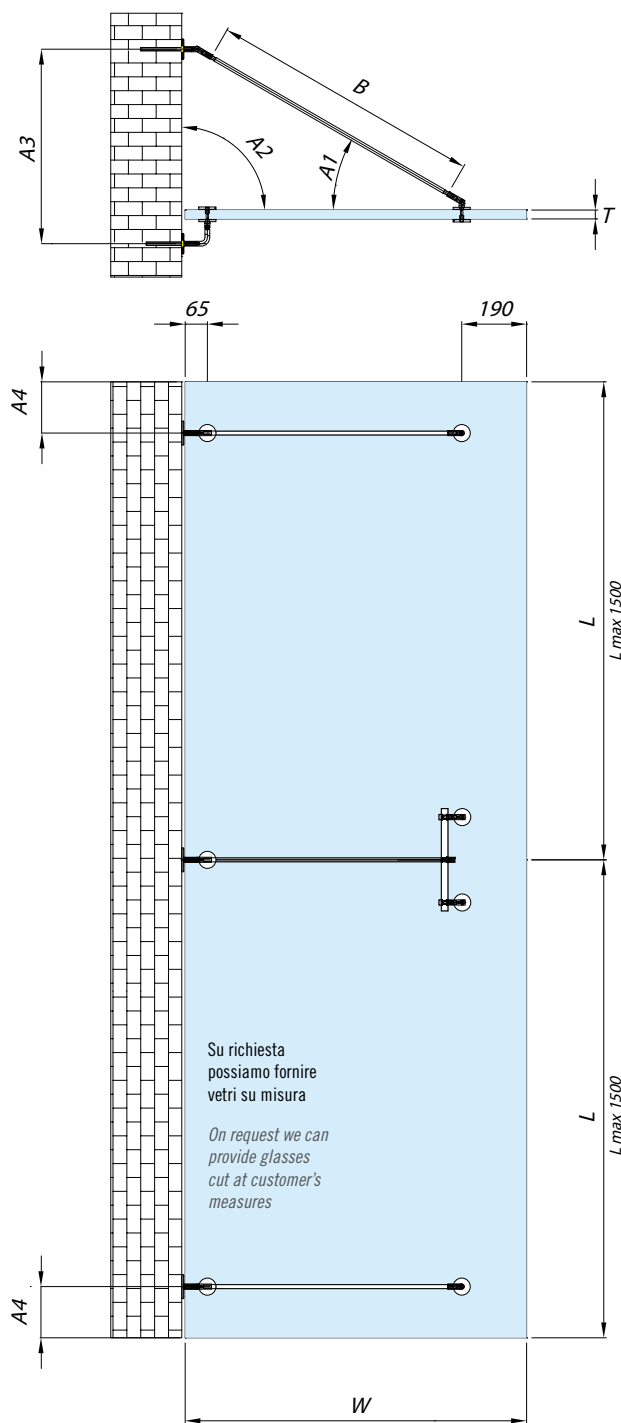
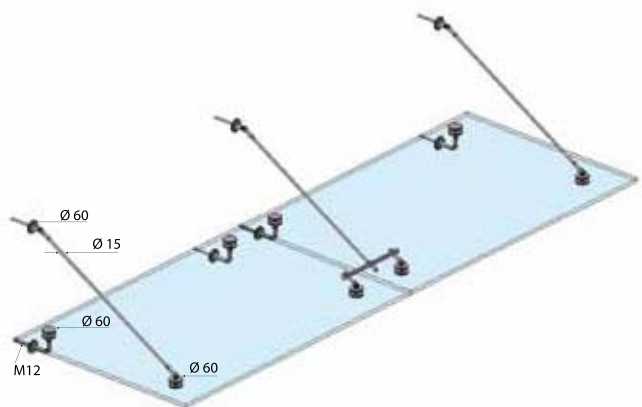
A1	A2	A3	A4	W	B
30°	90°	570 mm 22 7/16"	150 mm 5 7/8"	1000 mm 39 1/2"	775 mm 30 1/2"
28°	92°	545 mm 21 15/32"	150 mm 5 7/8"	1000 mm 39 1/2"	775 mm 30 1/2"
26°	94°	520 mm 20 15/32"	150 mm 5 7/8"	1000 mm 39 1/2"	775 mm 30 1/2"
24°	96°	495 mm 19 1/2"	150 mm 5 7/8"	1000 mm 39 1/2"	775 mm 30 1/2"

W 1500 MM (TESTATI CON L MAX = 2000 MM)

W 59 1/16" (TESTED WITH L MAX = 78 3/4")

A1	A2	A3	A4	W	B
30°	90°	860 mm 33 27/32"	300 mm 11 13/16"	1500 mm 59 1/16"	1350 mm 53 5/32"
28,5°	91,5°	825 mm 32 1/2"	300 mm 11 13/16"	1500 mm 59 1/16"	1350 mm 53 5/32"
27°	93°	790 mm 31 1/8"	300 mm 11 13/16"	1500 mm 59 1/16"	1350 mm 53 5/32"
25,5°	94,5°	755 mm 29 23/32"	300 mm 11 13/16"	1500 mm 59 1/16"	1350 mm 53 5/32"





Vetro non incluso - Glass not included

AISI316	Profondità W Width W	Composto da: Compsing of:
E95600	1000 mm - 39 1/2"	E96300 (3pc.) - E96400 (4pc.) E97100 (2pc.) - E97200 (1pc.) - E98100 (3pc.)
E95610	1500 mm - 59 1/16"	E96300 (3pc.) - E96400 (4pc.) E97100 (2pc.) - E97200 (1pc.) - E98200 (3pc.)

**Sistema di Pensiline IAMdesig con relative caratteristiche di carico.**

il sistema è stato testato e riflette l'alta Sicurezza che caratterizza i prodotti IAMdesig. I risultati interessano applicazioni con vetri di profondità 1000/1500 mm con l'utilizzo di 3 bracci di sostegno. I prodotti hanno superato i test necessari per garantirne la resistenza alla neve, al vento e altri fattori di sicurezza come richiesto da norme Europee.

**IAMdesig Canopies System with relevant load characteristics**

The system has been tested and reflects the high Security that characterizes IAMdesig the products. The results refer to applications with glasses of 1000/1500mm width with the use of three supporting brackets. The products have passed the tests necessary to ensure its resistance to snow, wind and other safety factors as required by European standards.

**RISULTATI DEI TEST CON VETRI TEMPERATI E ACCOPPIATI**

TEST RESULTS WITH TEMPERED AND LAMINATED GLASSES

Caratteristiche vetro Glass characteristics	T	L	W	Risul. Test Test results
8 + 8 mm + 1,52 mm pvb 5/16" + 5/16" + 1/16"	max 1500 + 1500 mm max 59 1/16" + 59 1/16"	1000 mm 39 1/2"	1000 mm 39 1/2"	2 kN/m <sup>2</sup>
10 + 10 mm / 1,52 mm pvb 3/8" + 3/8" + 1/16"	max 1500 + 1500 mm max 59 1/16" + 59 1/16"	1000 mm 39 1/2"	1000 mm 39 1/2"	3 kN/m <sup>2</sup>
12 + 12 mm / 1,52 mm pvb 1/2" + 1/2" + 1/16"	max 1500 + 1500 mm max 59 1/16" + 59 1/16"	1000 mm 39 1/2"	1000 mm 39 1/2"	3,5 kN/m <sup>2</sup>
10 + 10 mm / 1,52 mm pvb 3/8" + 3/8" + 1/16"	max 1500 + 1500 mm max 59 1/16" + 59 1/16"	1500 mm 59 1/16"	1500 mm 59 1/16"	3 kN/m <sup>2</sup>
12 + 12 mm / 1,52 mm pvb 1/2" + 1/2" + 1/16"	max 1500 + 1500 mm max 59 1/16" + 59 1/16"	1500 mm 59 1/16"	1500 mm 59 1/16"	3,5 kN/m <sup>2</sup>

**INFORMAZIONI IMPORTANTI PER UNA CORRETTA INSTALLAZIONE**

IMPORTANT INFORMATION FOR A PROPER INSTALLATION

W 1000 MM (TESTATI CON L MAX = 2000 MM)

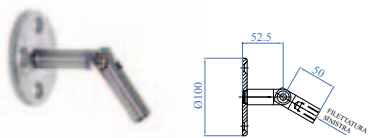
W 39 1/2" (TESTED WITH L MAX = 78 3/4")

A1	A2	A3	A4	W	B
30°	90°	570 mm 22 7/16"	150 mm 5 7/8"	1000 mm 39 1/2"	775 mm 30 1/2"
28°	92°	545 mm 21 15/32"	150 mm 5 7/8"	1000 mm 39 1/2"	775 mm 30 1/2"
26°	94°	520 mm 20 15/32"	150 mm 5 7/8"	1000 mm 39 1/2"	775 mm 30 1/2"
24°	96°	495 mm 19 1/2"	150 mm 5 7/8"	1000 mm 39 1/2"	775 mm 30 1/2"

W 1500 MM (TESTATI CON L MAX = 2000 MM)

W 59 1/16" (TESTED WITH L MAX = 78 3/4")

A1	A2	A3	A4	W	B
30°	90°	860 mm 33 27/32"	300 mm 11 13/16"	1500 mm 59 1/16"	1350 mm 53 5/32"
28,5°	91,5°	825 mm 32 1/2"	300 mm 11 13/16"	1500 mm 59 1/16"	1350 mm 53 5/32"
27°	93°	790 mm 31 1/8"	300 mm 11 13/16"	1500 mm 59 1/16"	1350 mm 53 5/32"
25,5°	94,5°	755 mm 29 23/32"	300 mm 11 13/16"	1500 mm 59 1/16"	1350 mm 53 5/32"



**AISI316**

Descrizione  
Description

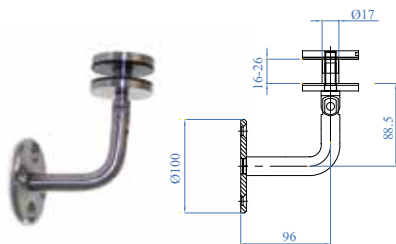
E96100 Fissaggio per tirante a muro con flangia  
Fixing with wall tension wire with flange



**AISI316**

Descrizione  
Description

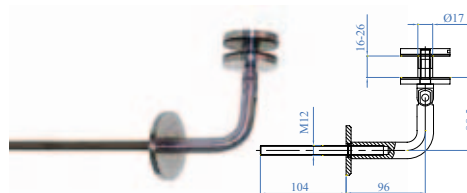
E96300 Fissaggio per tirante a muro con barra filettata  
Fixing with wall tension wire with threaded bar



**AISI316**

Descrizione  
Description

E96200 Supporto vetro con flangia  
Glass support with flange



**AISI316**

Descrizione  
Description

E96400 Supporto vetro con barra filettata  
Glass support with threaded bar



**AISI316**

Descrizione  
Description

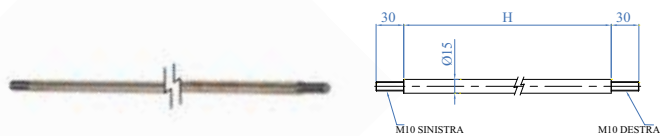
E97100 Supporto per vetro  
Glass support



**AISI316**

Descrizione  
Description

E97200 Doppio supporto per vetro  
Double glass support



Tirante con doppia filettatura  
Double threaded Tensioner

**AISI316**

Dimensioni  
Dimensions

E98100 775 mm  
30 1/2"

E98200 1350 mm  
53 5/32"

Esempio di applicazione della Pensilina  
TUBE con 2 bracci  
Prodotto unico ideato esclusivamente  
da IAMdesign rivoluzionario perchè non  
necessita di tiranti di supporto

*Example of application of TUBE Canopy with  
2 brackets*

*Unique product designed exclusively by  
IAMdesign. revolutionary because it does not  
require supporting tension wires*

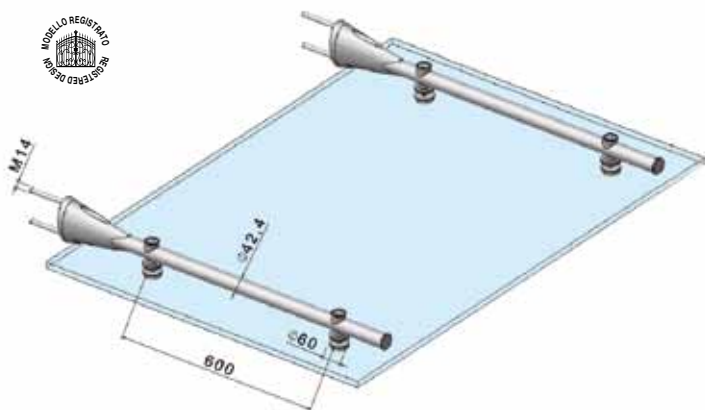


INNOVATION ARCHITECTURAL METAL

by

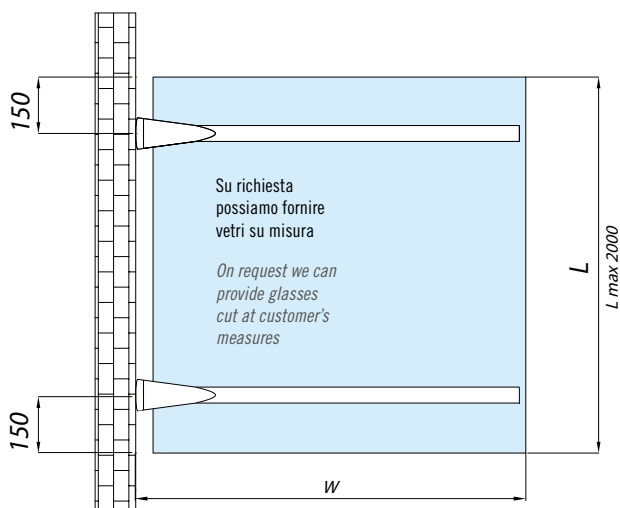
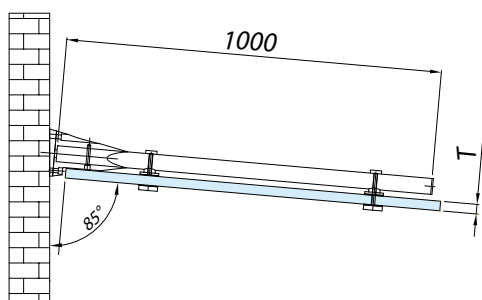
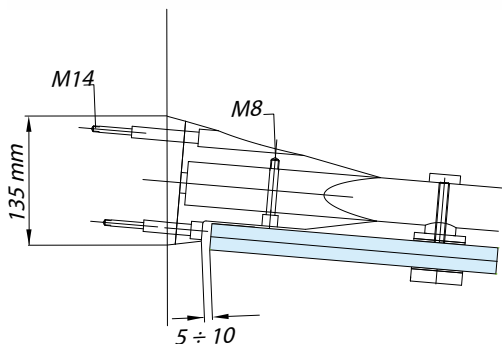
ARTEFERRO INOX  
THE STAINLESS STEEL RAILING SYSTEM

PENSILINE TUBE  
TUBE CANOPIES



Sistema totalmente nuovo che permette di realizzare sicurissime pensiline senza bisogno di tiranti di sostegno. Facilissima installazione e massima sicurezza per pensiline profonde fino a 1500 mm

Completely new system that allows the realization of totally secure canopies without the need of supporting tension wires. Easy to install and maximum security for canopies up to 59 1/16" wide



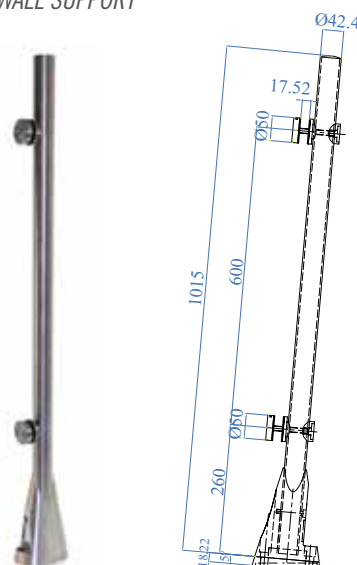
RISULTATI DEI TEST CON VETRI TEMPERATI E ACCOPPIATI  
TEST RESULTS WITH TEMPERED AND LAMINATED GLASSES

Caratteristiche vetro Glass characteristics	T	L	W	Risul. Test Test results
8 + 8 mm + 1,52 mm pvb 5/16" + 5/16" + 1/16"	max 2000 mm max 78 3/4"	1000 mm 39 1/2"	2 kN/m <sup>2</sup>	
10 + 10 mm / 1,52 mm pvb 3/8" + 3/8" + 1/16"	max 2000 mm max 78 3/4"	1000 mm 39 1/2"	2 kN/m <sup>2</sup>	
12 + 12 mm / 1,52 mm pvb 1/2" + 1/2" + 1/16"	max 2000 mm max 78 3/4"	1000 mm 39 1/2"	2 kN/m <sup>2</sup>	
10 + 10 mm / 1,52 mm pvb 3/8" + 3/8" + 1/16"	max 2000 mm max 78 3/4"	1500 mm 59 1/16"	3 kN/m <sup>2</sup>	
12 + 12 mm / 1,52 mm pvb 1/2" + 1/2" + 1/16"	max 2000 mm max 78 3/4"	1500 mm 59 1/16"	3,5 kN/m <sup>2</sup>	



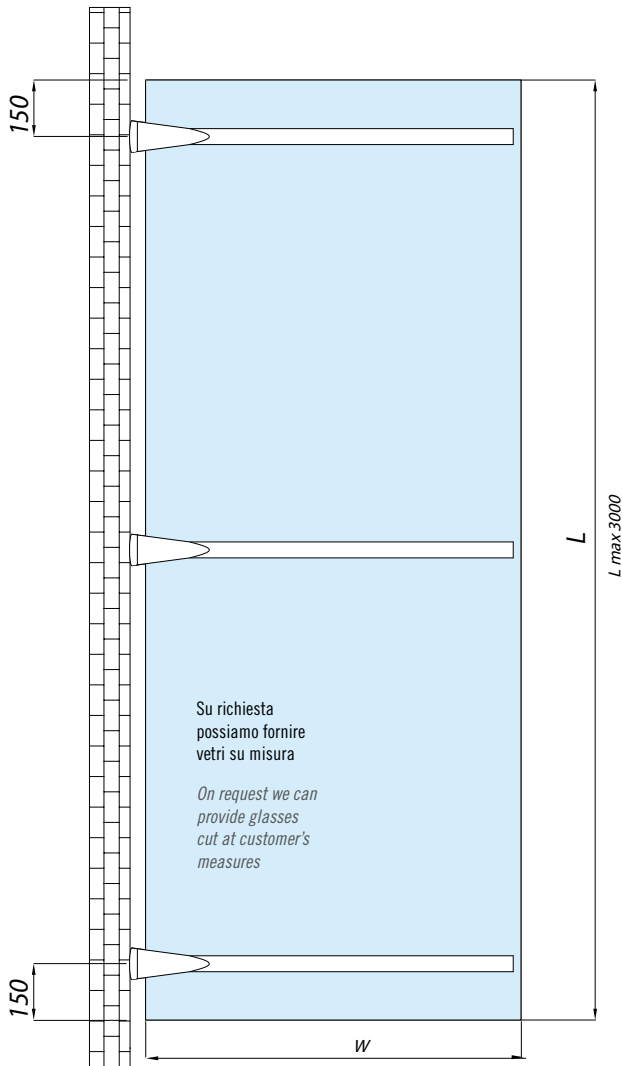
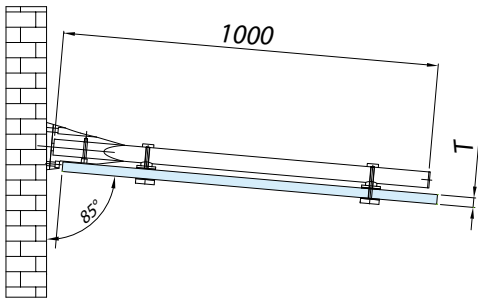
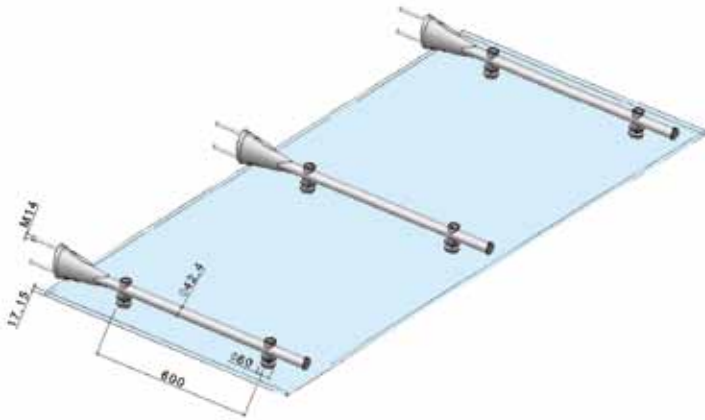
I VETRI SONO FORNITI SOLO SU RICHIESTA INSIEME ALLA PENSILINA  
GLASSES ARE SUPPLIED ONLY IF REQUESTED TOGETHER WITH THE CANOPY

SUPPORTO A MURO  
WALL SUPPORT



AISI316

E97500

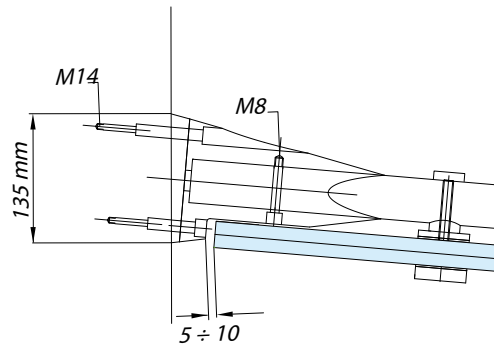


Sistema totalmente nuovo che permette di realizzare sicurissime pensiline senza bisogno di tiranti di sostegno. Facilissima installazione e massima sicurezza per pensiline profonde fino a 1500 mm

Completely new system that allows the realization of totally secure canopies without the need of supporting tension wires. Easy to install and maximum security for canopies up to 59 1/16" wide

RISULTATI DEI TEST CON VETRI TEMPERATI E ACCOPPIATI  
TEST RESULTS

Caratteristiche vetro Glass characteristics	T	L	W	Risul. Test Test results
8 + 8 mm + 1,52 mm pvb 5/16" + 5/16" + 1/16"		max 2000 mm max 78 3/4"	1000 mm 39 1/2"	2 kN/m <sup>2</sup>
10 + 10 mm / 1,52 mm pvb 3/8" + 3/8" + 1/16"		max 2000 mm max 78 3/4"	1000 mm 39 1/2"	2 kN/m <sup>2</sup>
12 + 12 mm / 1,52 mm pvb 1/2" + 1/2" + 1/16"		max 2000 mm max 78 3/4"	1000 mm 39 1/2"	2 kN/m <sup>2</sup>
10 + 10 mm / 1,52 mm pvb 3/8" + 3/8" + 1/16"		max 2000 mm max 78 3/4"	1500 mm 59 1/16"	3 kN/m <sup>2</sup>
12 + 12 mm / 1,52 mm pvb 1/2" + 1/2" + 1/16"		max 2000 mm max 78 3/4"	1500 mm 59 1/16"	3,5 kN/m <sup>2</sup>









# DESIGN

**POSSIAMO SVILUPPARE  
I TUOI PROGETTI PIÙ  
AMBIZIOSI  
CONTATTACI!!!**

***WE CAN DEVELOP YOUR  
MOST AMBITIOUS  
PROJECTS  
CONTACT US!!!!***

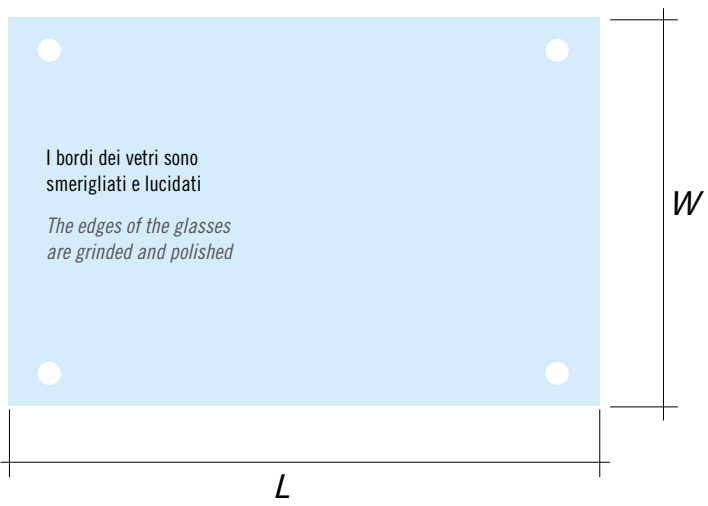
 Tel. (+39) 0445 580 580

 [india@arteferro.com](mailto:india@arteferro.com)  
[iamdesign@arteferro.com](mailto:iamdesign@arteferro.com)

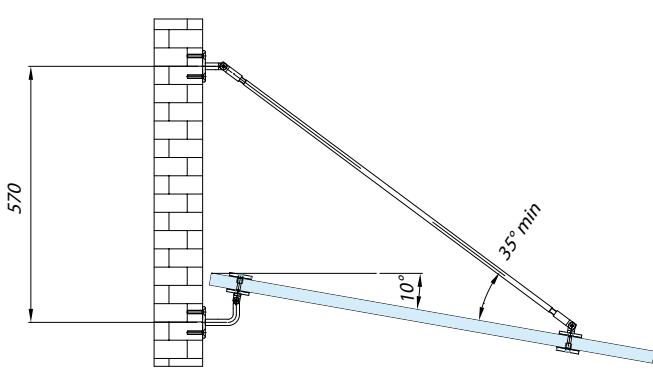
Esempio di lavoro speciale eseguibile con i prodotti della linea pensiline di IAMdesign

*Example of a special job that can be made with the products of the canopies line of IAMdesign*

PER UN PREVENTIVO COMPILA QUESTA PAGINA E SPEDISCI LA VIA FAX O E-MAIL - FOR A QUOTE, COMPLETE FORM AND SEND TO IND.I.A. BY FAX OR E-MAIL



Modello/ Model: \_\_\_\_\_  
 Quantità/Q.ty: \_\_\_\_\_  
 L: \_\_\_\_\_  
 W: \_\_\_\_\_



Spessore vetro/Glass Thickn.

	8+8	10+10	12+12
	5/16" + 5/16"	3/8" + 3/8"	1/2" + 1/2"
	<input type="checkbox"/>	<input type="checkbox"/>	<input type="checkbox"/>

Vetro temperato/ Tempered Glass

SI - YES	NO - NO
<input type="checkbox"/>	<input type="checkbox"/>

Inclinazione vetro/Glass Inclination \_\_\_\_\_

NOTE/ NOTES:

\_\_\_\_\_  
 \_\_\_\_\_  
 \_\_\_\_\_  
 \_\_\_\_\_

Nome/Name _____	Telefono/Telephone _____
Azienda/Company _____	Fax _____
Via, n./Street, nr. _____	E-mail _____
Cap., Città/Postcode, City, Country _____	Partita IVA/V.A.T. code _____

## CERTIFICAZIONI CERTIFICATION

Vogliamo essere sicuri che i progetti IAM design siano all'altezza delle prestazioni richieste. Per questo sottoponiamo i nostri prodotti a numerosi test di resistenza a intemperie e a sollecitazioni fisiche, e li esaminiamo costantemente con le nostre ispezioni.

Garantisce il tutto la quarantennale esperienza Ind.i.a. nel mondo dei metalli.

**Contattaci per avere copia dei certificati o visita [www.arteferrouinox.com](http://www.arteferrouinox.com) - [www.iamdesign.com](http://www.iamdesign.com)**

*We want to ensure that the projects IAMdesign are up to the required performances. For this purpose we submit our products to numerous tests of resistance to bad weather and physical stress, and keep them constantly under verification with our quality control checks. Ind.i.a.'s forty years experience in the world of metals warrants all this.*

*Contact us for copies of certificates or visit [www.arteferrouinox.com](http://www.arteferrouinox.com) - [www.iamdesign.com](http://www.iamdesign.com)*

## PROGETTATO PER TE DESIGNED FOR YOU

Ci piace pensare che questi prodotti a catalogo siano solo il primo passo verso la realizzazione dei Tuoi obiettivi.

La nostra squadra di professionisti è a completa disposizione per sviluppare assieme a Te ogni progetto, e fornirTi una consulenza mirata nella scelta degli articoli più adatti. **Inviaci il tuo progetto, noi realizzeremo il Tuo parapetto.**

*We like to think that those products in the catalogue are only the first step towards the realization of your goals.*

*Our team of professionals is at your disposal to develop with you every project, and to give you a targeted advice in the choice of the most suitable items. Send us your project, we will make your railing.*

## PRODOTTI SU MISURA CUSTOMIZED PRODUCTS

In caso di lavori complessi o di esigenze particolari, i progettisti e i tecnici studiano e realizzano il prodotto su misura più adatto.

**Prodotti extra standard anche per piccoli lavori.**

*In the case of complex works or special needs, designers and technicians study and realize the more suitable customized product.*

*Extra standard products even for the small jobs.*

## STRUMENTI TECNICI TECHNICAL TOOLS

Visita il sito [arteferro.com/architetti](http://arteferro.com/architetti) per scaricare gratuitamente i blocchi 3D e le schede tecniche utili alla realizzazione dei Tuoi progetti.

*For a free download of the 3D blocks and technical schemas useful for the realization of your projects, visit the [arteferro.com/architects](http://arteferro.com/architects) website.*

## IL CATALOGO IAMDESIGN THE IAMDESIGN CATALOGUE

Visita il sito [arteferro.com/design](http://arteferro.com/design) per scaricare gratuitamente i blocchi 3D e le schede tecniche utili alla realizzazione dei Tuoi progetti.

*For a free download of the 3D blocks and technical schemas useful for the realization of your projects, visit the [arteferro.com/design](http://arteferro.com/design) website.*



## DIAMO FORMA AI TUOI PROGETTI

Molto più di un **semplice** catalogo, qui si racchiude un **servizio** completamente nuovo rivolto ai professionisti dell'architettura e della progettazione: **strumenti** tecnici sia online che offline realizzati con specialisti **esperti**, ed un servizio di **consulenza su misura** al fine di **collaborare** passo passo con ogni professionista alla realizzazione dei suoi progetti.



## WE GIVE SHAPE TO YOUR PROJECTS

*Much more than **simply** a catalogue, this brochure contains a completely new **service** addressed to the professionals of architecture and design: technical **tools** both online and off line made with **experts** specialists, and an **advisory tailored service** for a step by step cooperation with any professional for the realization of any project.*

## È ARRIVATO IL NUOVO CATALOGO IAMDESIGN BY ARTEFERROINOX

Grafica totalmente rinnovata, contenuto aggiornato e nuovi approfondimenti su tutta la linea dei prodotti IAMdesign

## THE NEW IAMDESIGN CATALOGUE BY ARTEFERROINOX IS NOW AVAILABLE

*Brand new graphics, updated contents and new focuses on the whole IAMdesign products serie*





# IL GRANDE FABBRO

ARCHITECTURAL  
METAL CONTRACTING

Vicenza Fiera - Tradeshow



Asiago Chalet privato - Private chalet



Kuwait Villa privata - Private Villa



Bassano del Grappa Residence



Megeve Villa privata - Private Villa



Okija Tenuta provata - Manor House



Thiene Villa privata - Private Villa



Principato di Monaco Palazzo - Palace



IL GRANDE FABBRO® è la divisione di Ind.i.a. SPA che si occupa di lavori finiti.

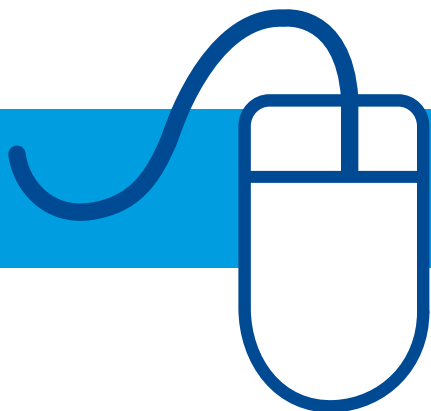
In gran parte dei casi questo accade collaborando con i fabbri che tramite Ind.i.a. ci contattano (un esempio è stato il restauro di Piazza Vittorio a Roma). Qualche volta direttamente (creazione ex novo del ferro battuto ad Euro Disney, Parigi) causa enormità dell'opera che ci obbliga ad affrontare il lavoro in prima persona.

IL GRANDE FABBRO® è infatti sempre a disposizione del progettista laddove i lavori di recinzione, protezione o puramente estetici in ferro, inox e altri metalli siano parte importante di un progetto. Uno studio tecnico in grado di progettare con esperienza e creatività qualsiasi elemento il committente richieda ed una squadra di dipendenti altamente qualificati con capacità tali da permetterci di sviluppare opere di qualunque dimensione e complessità sono gli elementi chiave che ci contraddistinguono. La presenza capillare nei mercati principali della casa madre Ind.i.a. SPA ( 20 filiali ed oltre 2500 distributori), leader mondiale nella produzione e distribuzione di semi lavorati in ferro ed acciaio inox, facilita ad IL GRANDE FABBRO® l'esecuzione di opere praticamente in ogni parte del mondo. In conclusione; capacità tecniche, conoscenze artistiche e la flessibilità offerte da IL GRANDE FABBRO® lo rendono il partner ideale par chiunque abbia necessità di compiere opere di medie e grandi dimensioni in ferro battuto, acciaio inox e altri metalli.

*IL GRANDE FABBRO® is the division of Ind.i.a. S.P.A. that deals with finished works.*

*This division functions through two channels: the first channel begins with blacksmiths and their cooperation with our head office, as was the case for the restoration of Piazza Vittorio in Rome. The second channel is the direct one: it deals with projects of such mass proportions that entire plans must be finalized face-to-face, as it occurred during the initial and subsequent design phases of wrought iron fencing at Euro Disney in Paris.*

*One of the reasons IL GRANDE FABBRO® is so exceptional is because the service is always at the disposal of the designer. Whether your project includes: security gating, fencing, purely aesthetic wrought iron works, stainless steel, or other metals, we will be there to help you create exactly what you are looking for. Our skilled technical department, as well as our expert blacksmiths, have worked with each component we produce, and they are able to develop works of any size and complexity. The widespread presence of Ind.i.a. S.P.A., as well as that of its affiliates and distributors in the metal industry, allows the IL GRANDE FABBRO® service to reach fabricators, architects, and designers all over the world. As a matter of fact, Ind.i.a. SPA is a world leader company in the production and distribution of wrought iron and stainless steel components. Therefore, the technical skills, the artistic knowledge, and the flexibility offered by IL GRANDE FABBRO®, make it the ideal service and partner for anyone wishing to establish plans of moderate to large dimensions in wrought iron, stainless steel and other metals.*



arteferro  
web

## UN VALIDO STRUMENTO A DISPOSIZIONE DI TUTTI I CLIENTI

- INSERIMENTO ORDINI
- RICERCA ORDINI
- STATISTICHE DI ACQUISTO
- ANALISI DEL TRACKING ORDINI DELL'UTENTE
- SCADENZE MATURATE
- INTERROGAZIONE DISPONIBILITÀ
- ORDINI INEVASI
- INTERROGAZIONE BOLLE  
E FATTURE CON DOWNLOAD DEL PDF

## *A GREAT INSTRUMENT AT THE DISPOSAL OF ALL OUR CUSTOMERS*

- *MAKE ORDER*
- *SEARCH ORDERS*
- *PURCHASE STATISTICS*
- *ANALYSIS OF CUSTOMER'S ORDERS' TRACKING*
- *DEADLINES*
- *STOCK AVAILABILITY*
- *BACK ORDERS*
- *CHECKING OF DELIVERY NOTES AND INVOICES  
WITH DOWNLOAD OF PDF*

Contattaci per attivare  
il tuo account

*Contact us to activate  
you account*

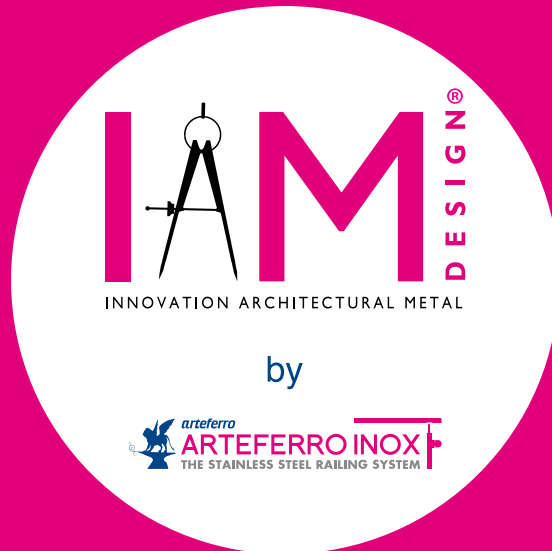


by



Nel ringraziarVi per l'attenzione dedicata alla lettura di questo documento, Vi ricordiamo che IAMdesign può soddisfare ogni Vostra particolare esigenza con progetti studiati e realizzati ad hoc. Per qualsiasi informazione Vi preghiamo di contattarci:  
tel. 0445 580580  
e-mail: [info@arteferro.com](mailto:info@arteferro.com)

*While thanking you for the attention given to this document, may we remind you that IAMdesign can satisfy any special need you might have, with projects studied and realized "ad hoc"*  
*For any information, feel free to contact us:*  
Phone: +39 0445 580580  
e-mail: [info@arteferro.com](mailto:info@arteferro.com)



#### U.S.A. East

Indital Houston  
7947 Mesa Drive  
Houston Texas 77028 U.S.A.  
Tel. (+1) (713) 694-6065 / 1-800-772-4706  
fax: (+1) (713) 694-2055  
www.indital.com  
forgings@indital.com

#### U.S.A. West

Arteferro Miami  
2955 N.W. 75<sup>th</sup> Street Miami  
Florida 33147 - U.S.A.  
Tel. (+1) (305) 836-9232 / 1-877-723-6743  
Fax: (+1) (305) 836-4113  
www.arteferromiami.com  
info@arteferromiami.com

#### ITALY

Arteferro Sud  
Via Piano Alvanella 83024  
Monteforte Irpino (AV)  
Tel. (+39) 0825 68 00 81  
Fax (+39) 0825 68 34 98  
e-mail: info@arteferrosud.it  
www.arteferrosud.it

#### ESPAÑA

Ind.i.a. Spain  
28500 Arganda Del Rey (Madrid) - España  
C/. Abedul, 43 - Poligono "El Guijar"  
Tel. (+34)(91)8701897 - 8700819  
Fax (+34)(91)8700820  
e-mail: info@arteferro.es  
www.arteferro.es

#### FRANCE

Ind.i.a. France  
Z.A.E. La Baume RN 113  
34290 Servian France  
Tel. (+33)(0) 4.67.39.42.81  
Fax (+33)(0) 4.67.39.20.90  
e-mail: france.india@wanadoo.fr  
www.franceindia.com

#### HRVATSKA

Arteferro Dohomont  
Sirkovisce bb 40324 Gorican - Hrvatska  
Tel. (+385)(0)40 602-222  
Fax (+385)(0) 40 602-230  
www.arteferro-dohomont.hr  
e-mail: info@arteferro-dohomont.hr

#### ROMÂNIA

Arteferro Romania  
Targoviste - Romania Soseaua  
Gaesti, (sat Colanu) Judetul Dambovit  
Tel. (004) 0751060204, (004) 0745395590  
Fax (004) 0745731210  
www.arteferro.ro  
e-mail: info@arteferro.ro

#### РОССИЯ

Arteferro Russia  
603092 Nizhny Novgorod (Russia)  
Moskovskoje Shosse, 320 B  
Tel. (+7) (831) 296-19-99  
Fax (+7) (831) 279-28-63  
www.arteferro.ru  
e-mail: info@arteferrorussia.com

#### УКРАЇНИ

Arteferro Ukraine  
5, Avtoparkova, 02660 Kiev - Ukraine  
Tel. (+38) (044) 4920331  
Mobile (+38) (050) 4529704  
Fax (+38) (044) 4920332  
www.arteferroukraine.com.ua  
e-mail: office@arteferroukraine.com

#### SVERIGE

Arteferroinox AB  
Göteborgsvägen 142 Box 12  
445 37 BOHUS  
Tel. +46 (0) 31-352 68 00  
Fax: +46 (0) 31-352 68 49  
info@arteferroinox.se  
www.arteferroinox.se

#### POLSKA

Ind.i.a Poland  
ul. Gierdziejewskiego 7 02-495  
Warszawa POLAND  
Tel +48 (22) 397-79-40  
Fax +48 (22) 397-21-55  
www.indiapoland.com  
info@indiapoland.com

#### MÉXICO

Arteferro Monterrey Av. E. Martínez Lara # 117  
Parque Industrial Milimex Carretera  
Sta. Rosa Km. 3 Apodaca Nuevo León C.P. 66637  
Tel: (81) 1295-5094 / 1295-5095  
Fax: (81) 1295-5097  
www.arteferromonterrey.com  
info@arteferromonterrey.com

#### BRASIL

Ind.i.a. Brasil  
Rua Padre Feijó, 480 CEP 95190-000  
São Marcos / Rs Brasil  
Tel. - Fax (+55) (0) 54 32911416  
www.arteferrobrasil.com.br  
e-mail: arteferro@arteferrobrasil.com.br

#### ARGENTINA

Arteferro Argentina  
Suarez 760(1162) Capital Federal Buenos Aires  
Republica Argentina  
Tel./Fax (+54) 11 43012637  
www.laherreria.com

#### CHILE

Arteferro Chile  
Los arrayanes 250, Comuna De Colina,  
Santiago De Chile  
Tel./Fax (+56) 2 738 7419  
www.arteferrochile.cl

#### NIGERIA

Arteferro Botnic  
Block C/5 Lagos State small scale  
Industrial Estate,  
Fatai Atere Way, Matori, Lagos  
Tel. 00234 1 891 4155 - 00234 1 2799 093-4  
www.arteferrobotnic.com  
e-mail: info@arteferrobotnic.com

www.arteferroinox.com  
www.iamdesign.com